



2018 ANNUAL REPORT

MARTHA & MARYSM
CARING FOR CHILDREN AND SENIORS SINCE 1891

2018 ANNUAL REPORT

MARTHA & MARYSM
CARING FOR CHILDREN AND SENIORS SINCE 1891

Table of Contents

2	LEADERSHIP
3	MESSAGE FROM THE CEO
4	2018 RENOVATION
6	HEALTH SERVICES
8	SENIOR LIVING
10	AT HOME
12	KIDS
14	CONGREGATIONS AND SPONSORS
15	MESSAGE FROM THE BOARD OF TRUSTEES
16	VOLUNTEERS
17	SOCIAL ACCOUNTABILITY
18	EVENTS
20	DONORS
22	FINANCIALS
24	AWARDS
25	LOCATIONS

Our Mission

Martha & Mary provides quality, compassionate care and intergenerational experiences for children, adults, and seniors regardless of faith, ethnicity, or economic status. We do this in a Christian manner by offering those we serve caring rehabilitation, a safe place to grow and learn, and an opportunity to live with dignity, honor, and individuality.

Board of Trustees

Helen Stoll, [President](#) | Alan Crain, [Vice President](#) | Mary Polensky, [Secretary](#)
Bill Baird • Cary Bozeman • Katherine De Bruyn • Susan Eagan • Don Lachata • Marlene Le Mire
Doug Love • Jamie Mittet • Bobbie Moore • Aaron Schielke • Galen Schuler • Pastor Kent Shane
[Retired Trustees](#): Tom Hawks • Lisa Hecker • Carol Hoffman • Bob Nichols • Phil Rockefeller

Senior Leadership

Lynette Ladenburg Chief Executive Officer	Tammi Palodichuk Administrator, Child Care Centers	Anna Winney Director of Human Resources and Organizational Development
Chris Vernon-Cole Chief Operations & Strategy Officer	Heather Dartt Administrator, Before and After School	Paula Rimmer Director of Development
Robin Schuman Chief Financial Officer	Jamie Payseno Administrator, Bay Vista Commons	Kristine Grant Director of Marketing, Communications & Admissions
Sharon Christor Chief Clinical Officer		
Leah Meadows Director of Nursing Services	Diane Wasson Administrator, Home & Community Services	

On the cover...
Olympus Morning - Max Hayslette



On the cover: *Olympus Morning* is a painting by internationally acclaimed artist Max Hayslette. A West Virginia native, Hayslette moved to the Pacific Northwest in 1962 and has lived and worked in Kitsap County for more than 40 years. His long-standing relationship with Martha & Mary led him to establish a bequest of art that will include unsold originals and exclusive reproduction rights for all pieces from The Northwest Collection, a body of work that features the coastlines, mountains, and forests of this region. Hayslette's paintings can be found throughout the halls and common spaces of the Health and Rehab Center and are enjoyed by everyone. For more information on Max's art, visit: www.maxhayslette.com.

A Message from the CEO

As I reflect upon 2018 at Martha & Mary, a quote that perfectly captures our options for managing senior care and early education comes to mind:

The pessimist complains about the wind; the optimist expects it to change; the realist adjusts the sails.
~William Arthur Ward, American author, editor, pastor and teacher

We approach change from the realist point of view, adjusting “the sails,” which we call our business practices, as we do our best to anticipate and adapt. In early learning and in senior healthcare and housing, now more than ever, change is the norm.

This environment of constant change is not unique to Martha & Mary. Rather, this is a reflection of shifting social and economic pressures as our industries cope with the unprecedented number of seniors in our population, on one hand, and on the other, the social and emotional needs of young children today, which must be addressed if they are going to learn in school and thrive in life. We also face change as we recruit and retain our workforce in a climate of rising wages and a scarcity of workers. Lastly, government regulation is ever increasing. Compliance is costly but necessary to deliver top quality care and outcomes.

For 128 years, Martha & Mary has grappled with change. We are still here today, caring for our community, because we embrace these fundamental practices:

- We make change our friend.**
By accepting the inevitability of change, we adopt an open mindset, which keeps us receptive to new ideas and committed to constant improvement.
- We support our workforce.**
Recruitment and retention must be strategic priorities for an organization like Martha & Mary. We have increased wages, and equally important, we are focused on career development and advancement to foster personal and professional growth.

We stay true to our mission.
Our mission is caring—our sole purpose is to meet community needs. We began in 1891, caring for children, and we expanded into care for seniors when this became the pressing need in our community. The Greater Kitsap region relies on Martha & Mary as we serve our community from the beginning of life to the end of life.

The support of our community—our workforce, business partners, donors, trustees, volunteers and more—has never been more important. On behalf of Martha & Mary, our sincere thanks for our community's commitment to our mission. We look forward to our journey together through these changing times.

With kindness,

Lynette L. Ladenburg
Chief Executive Officer





04



01



01



02



03



04

Best Practices 2018 RENOVATION

A landmark grant from Washington State, awarded in 2018, is helping complete a comprehensive best practices renovation of our Health and Rehab Center. This \$1,000,000 grant from the State's Building Communities Fund program recognizes Martha & Mary's valuable role in our region, the quality of our care, the compassion and expertise of our caregivers, and employee dedication to our mission of caring. Capitalizing on building improvements that began in 2014, State funding, combined with other fundraising and our reserve funds, will extend the useful life of our campus by 25 years!

Work during 2018 focused on two major projects. The first of these was replacement of the Health and Rehab Center's roof. In summer 2018, a brand new roof was installed. In addition, repairs were made to dormers, soffets, and eaves, and all were repainted.

Renovation of the Marina Long-Term Care Unit was the second major project undertaken during 2018. Our talented crew began with a floor to ceiling remodel of the Marina

Dining Room. While this was taking place, we converted the Activities Room and TV Room into temporary dining areas, and residents held activities in the Chapel. The Bainbridge Community Foundation and Sodexo Senior Services also provided funding for this project, supplementing the Washington State grant. We celebrated the project's completion in December, and now, residents and staff are enjoying the fresh new look and the enhanced dining experience.

Renovation will continue into summer 2019 as we finish the Marina Unit remodel and conclude by rebuilding the Garden Rehab Unit's dining room, TV room, and nurses' station. This comprehensive best practices renovation will ensure our campus is up-to-date and ready to meet the needs of Kitsap's rapidly aging population for years to come. We are grateful to all funders for this investment in services for seniors and their families in Greater Kitsap.

01. To support best practices we installed energy efficient, dimmable lighting.

02. This new serving station supports 'restaurant style' dining, giving residents more choices at mealtime.

03. Residents gathered for the grand opening of the new Marina Dining Room.

04. We upgraded our facility with a new 100k square foot roof with a 30 year service life.

Compassionate, innovative and complete care.



HEALTH SERVICES



MEMORY CARE

Our memory care residents were introduced to battery operated, life-like cats and dogs. These companion pets have simulated breathing and movements and offer a sense of comfort while allowing for a low-maintenance, calming intervention.

NURSING OPPORTUNITY

Martha & Mary offers five tuition-free nursing assistant training classes per year. These classes are often the beginning of an amazing career in health-care. We are proud to be a part of that opportunity.

PARTNERSHIPS

We partner with Olympic College to support their Nursing programs to include Nursing Assistant training, Associate Degree Nursing students and Licensed Practical Nurse training. We celebrate their successes and welcome their enthusiasm for quality care.

Martha & Mary's Health and Rehab Center is an icon in the downtown Poulsbo landscape. Since the 1950s, seniors and their families have relied on us for compassionate care and services.

Within the Health and Rehab Center you will find a short-stay medical/rehabilitation unit, memory care living, and a long-term care unit. We have the capacity to provide care and services for up to 178 residents. In 2018, we maintained an average daily census of 167.

We are fortunate to be part of the Accredited Care Organization with CHI Franciscan and work closely with many Seattle based hospitals.

Providing quality care throughout each facet of Martha & Mary is paramount for our organization. In 2018, we maintained our Five-Star rating, based on the outstanding results of our annual, unannounced Washington State Department of Health survey. Teamwork and employee com-

mitment to excellence are the catalysts that produced this top quality care rating.

Our clinical team's exceptional performance in wound care was recognized with a Platinum Level of Achievement award from United Wound Healing. Of the 200 care facilities evaluated, only one other received a higher award than Martha & Mary.

Martha & Mary's Health and Rehab Center is not only a place of healing, but also a place of growth and development. In 2018, we become part of the CHI Franciscan's Northwest Washington Family Medicine Residency Program. Through this program, physicians gain geriatric training and experience. Additionally, we offer on-site, clinical experience to Olympic College nursing students and continue to manage our own Nursing Assistant training program. Welcoming all of these areas of interest to Martha & Mary has great benefit not only for us, but for the health care industry as a whole.

565 seniors served in 2018

More than 181,000 meals and snacks served

Our top 3 hospitals for admissions into Martha & Mary: Harrison, Jefferson, Swedish

Affordable living communities for seniors.



The saying goes, *Retirement is not an end, but rather a new beginning.* At three Senior Living communities, seniors and older adults find the security and amenities they need to pursue a comfortable life at attractive, high-quality apartment homes situated in desirable Kitsap locations.

Supporting our residents' comfort and security is essential, and we maintain and improve our properties to the highest standards. Last year, at the Ebenezer Senior Retirement Apartments, we made a significant campus improvement when we resurfaced the parking lot. We are grateful to the Kitsap County Community Development Block Program, which provided the majority of funding for this important enhancement.

At Bay Vista Commons, the assisted living center we manage in partnership with the Bremerton Housing Authority, residents enjoy a unique living solution for seniors. With a focus on access, financial security and quality accommodations, individuals of multiple resource backgrounds are able to live with the care and dignity they both need and deserve.

With a strong housing market in Kitsap, we supported a full census at each Senior Living location. As our region continues to struggle with a short supply of reasonably priced housing, we are proud to provide affordable home choices for seniors here in our community.



Bay Vista Commons in Bremerton offers seniors 60 assisted living and 12 memory care apartments. Designed with comfort, convenience and safety in mind, this community boasts amazing views of Oyster Bay with services and amenities that support resident independence.



Tucked away within the hills of Poulsbo and overlooking beautiful Liberty Bay and the Olympic Mountains, the Ebenezer Senior Retirement Apartments offers 24 affordable apartments to independent seniors who wish to remain active in their community.



Nestled in the quaint town of Kingston, the Village Green Senior Apartments is an income-qualified community with 35 apartments that provide independent seniors with tastefully designed accommodations and stunning views of Puget Sound.

Bay Vista Commons accommodated 92 seniors in 2018

27 residents lived at Ebenezer Senior Retirement Apartments in 2018

41 people called Village Green Senior Apartments home in 2018

Supporting senior independence.



Home Care

We offer exceptional, award-winning care to seniors throughout the Greater Kitsap region, allowing them to remain independent, safe and secure in the comfort of their own homes. Skilled and compassionate caregivers provide assistance a few hours a week or every day. Care can include medication reminders, transportation, meal preparation, light housekeeping, personal care, hygiene assistance, memory support and companionship.

Health Home

By providing care management services to high-risk Medicaid patients, we can help ensure they receive appropriate care in the most cost-effective setting. Operating under a “whole-person” philosophy, we work to improve care quality and to increase an individual’s participation in their own care. The benefits of this program result in significant reductions in hospital re-admissions, emergency room visits and the need for nursing home care.

MARTHA & MARY At Home

Caregiving is made up of small caring acts that alter the course of someone’s life. With great compassion, our in-home caregivers perform those acts every day, making it possible for clients to age in place at home with grace and dignity.

Our devoted caregivers were recognized for their high quality care when Martha & Mary AT HOME was named a “2018 Best of Home Care / Provider of Choice” for the ninth consecutive year! This award ranks our services among a select group of providers nationwide, based on client satisfaction scores gathered by *Home Care Pulse*.

Expanding our team to meet the community’s growing need for home care remained challenging in 2018. In response, we created a new Care Companion position. Care Companions are trained to care for clients needing only light

support, distinguishing them from Home Care Aides who must be certified to manage more complex care needs.

Outreach to those who care for loved ones at home was a focus for AT HOME in 2018. In partnership with Kitsap County Department of Long Term Care & Aging, we led two 6-session workshops called *Powerful Tools for Caregivers*. This nationally recognized program emphasizes self-care to aid in the successful care of others.

AT HOME is committed to meeting the needs of our region’s seniors with effective person-centered care. Looking forward, we plan to bring specialized training in dementia care to our direct care staff and continue classes for community caregivers.

74 individual caregivers provided services for 315 clients in 2018

Average age of clients: 84 years old

AT HOME clients were served from Jefferson County to Piece County

Care programs for children ages 1 month through 12 years.



Guiding young hearts and minds toward a bright future is our passion at Martha & Mary KIDS. We served more than 900 children in 2018 with outstanding care and early learning opportunities at our care centers, before and after school sites and summer enrichment program locations.

during this time, and we remain grateful to Silverdale Lutheran Church, which provided care space for nearly 30 children, and to our staff who pulled together to re-open a new and upgraded Early Learning Center.

INTERGENERATIONAL PROGRAM

Our signature enrichment program combines the wisdom of seniors with the excitement of childhood by bringing together senior residents and children to participate in activities that bridge generations, enrich lives and warm hearts.

EARLY LEARNING

Offering care for infants and toddlers in addition to pre-school and Pre-K classes for older children, our warm and supportive teachers focus on establishing a child's love of learning to develop a strong academic foundation in preparation for Kindergarten.

BEFORE AND AFTER SCHOOL

Our before and after school and summer school enrichment programs promote active minds, healthy hearts and lessons for life. Committed to supporting school academics, our dynamic teachers engage students in creative activities that integrate learning with fun.

Demand for high-quality child-care continues to increase in Kitsap, and our centers ran at near full capacity in 2018. We proudly maintained our Quality of Excellence rating from Early Achievers at each childcare center, in recognition of our exceptional programming and teacher qualifications and skills.

Before and After School continued to bloom in 2018. We collaborated with School's Out Washington, a statewide organization that supports before and after school programs, to develop a curriculum that aligns with the Quality Standards for After School and Youth Development Programs. In strong partnership with the North and Central Kitsap school districts, we continue to grow our program.

In June, we experienced some hardship when a major flood took place at the Early Learning Center in Silverdale, requiring an extensive interior refurbishment of the facility. We received amazing community support

Working closely with our KIDS families and partners, we anticipate another rewarding year providing childcare and early learning services to Kitsap families.

M&M KIDS served 705 families and 915 children

44 School District employee families received a discount

Over 115,000 meals and snacks served in 2018

Thank you to our 2018 Congregations

Bethany Lutheran Bainbridge Island	Port Madison Lutheran Bainbridge Island
Emmanuel Lutheran Bremerton	Poulsbo First Lutheran Poulsbo
Our Saviour's Lutheran Bremerton	Silverdale Lutheran Silverdale
Peace Lutheran Bremerton	Vinland Lutheran Poulsbo

During 2018, two of Martha & Mary's Member Congregations closed: Family of God in Bremerton and Community of Christ at Memorial Lutheran, also in Bremerton. Both congregations had a long association with our organization, and we are thankful for their role in Martha & Mary's ministry and mission of caring.

Thank you to our 2018 Gala Sponsors

Martha & Mary's business partners are also some of our most generous donors!

All year long, we work collaboratively with an indispensable group of companies who support us with financial management, employee benefit programs, clinical care (rehab therapy, nurse practitioner support), dining services, and facility planning and improvements. We appreciate the expertise and oversight they provide and the role they play in the delivery of top quality care.

Thank you to our amazing 2018 Gala Sponsors, whose contributions funded training programs and continuing education for Martha & Mary's more than 500 employees in 2018.

Kitsap Bank
Consonus
Optum Care
Sodexo
Propel Insurance
Clifton Larson Allen
Swift Plumbing
Rice Fergus Miller
Kitsap Sun

MARTHA
& MARY

A Message from the Board of Trustees

Our community's generosity makes a daily impact on Martha & Mary's ability to care for 2,000 children and seniors each year. Essential financial support from individuals, businesses, foundations, government, member congregations, and others throughout the region makes an impact in several crucial ways.

- Donations underwrote a portion of the \$1.2 million in undercompensated care Martha & Mary provided in 2018 to ensure services are available. Medicaid reimbursements do not meet the full cost of care, and Martha & Mary absorbs this shortfall. Contributions buffer the impact of this funding gap.
- Grants, primarily for capital needs, stretched our dollars to accomplish important renovation projects or replace and add new equipment. In 2018, grants underwrote major renovations, including a new roof at the Health and Rehab Center and a repaved parking lot at the Ebenezer.
- Individuals and business sponsorships funded important staff training sessions, as well as educational, life enrichment programs and activities for children and seniors.

On behalf of the Martha & Mary Board of Trustees, we offer our sincere and heartfelt appreciation to each of our donors and grantors. We are honored to acknowledge the hundreds of supporters who invested in our mission of caring in 2018 on the following pages.

With a mission-focused spirit, our organization's staff and volunteers work every day for the common good of our community. Daily, Martha & Mary's paid and volunteer workforce implement national best practices in eldercare, childcare and early childhood education. In particular, I would like to thank the community members who serve on our Board of Trustees and its committees. Their dedication and prudent oversight, in collaboration with our executive staff, provides accountability back to our community. Also, I would like to acknowledge our partnerships with educational, healthcare, and community organizations – they are essential for success in today's senior care and childcare environments.

Thank you for your faith in Martha & Mary's mission and your response to the needs of children, seniors and their families. With your friendship and generous donations of time and treasure, we will continue to deliver the best possible care across the generations.

With appreciation,

Helen Stoll

Helen Stoll
President, Board of Trustees





By volunteering, you have just given the most precious gift anyone could give...your time. Thank you.

2018 M&M VOLUNTEERS

Marilu Aganon
Ilene Albert
Lori Alder
Cindy Allpress
Era Anderson
Nicole Anderson
Phyllis Anderson
Carol Anspach
Summer Askew
Ted Austin
Michael Bachtel
Jennifer Bailey
Roy Behling
Juliana Benson
Jennifer Berndtson
Cheryl Berninghaus
Bill Bladen
Lita Bladen
Constance Borgomainerio
Jan Bourhill
Deborah Bowe
Carrina Brock
Lindsay Brown
Katie Burton
Aiden Buss
Carolyn Capalener
Kate Campbell
Grace Carson
Margaret Celestine
Chris Christiansen
Elizabeth Collins
Lynn Corbat
Rigel Correa
Douglas Coward
Makiah Cox
Adam Crawford
Missy Jarvis-Crawford
Rachel Cruz
Neil Dahmen
Jodi Davidson
Jon Dean
Sheila Dean
Roger Dean
Michele Dean
MaryAnn Edmonson
Cynthia Ellefson
Erin Ellinghausen
Pam Ettien
Gabby Everman

Jane Everson
Jordan Feliciano
Pat Fenton
Graciela Flores
Cathy Friesen
Judy Friesen
Kaitlyn Fyffe
Imogene Fyffe
Linda Gaudette
Gene Gilliam
Christina Goessman
Michelle Graebner
Sofia Guzman
Cat Haapala
Jerry Hagarty
Danielle Haberly
Mary Anne Haney
Richard Harmon
Dennis Harris
Arianna Hedge
Norma Henderson
Linda Henry
Annie Herington
Marilyn Heter
Megan Holmberg
Ann Hooper
David Hornbeck
Sylvia Homenuck
Brandon Jarvis
Charlotte Jorgensen
Jim Jorgensen
Ann Jacobs
Annie Jarrett
Linda Johnson
Carolyn Kay
Kathleen Kelley
Ben King
Lesa Klouda
Kandace Klemetsrud
Jeremy Kramer
Christopher Kramer
Hailey Kramer
Haley Kunka
Carol LaGrandeur
Ramona Lachata
Steven Lavoie
Iyreland Lawson
Marlene Le Mire

Sheila Luke
Jon Luke
Patti Lumsden
Rachel MacFann
Kari MacKenzie
Bill Mahler
Shelley Malan
Delores Martinez
Nieves Martir
Christina Martinson
Roni Maruda
Marilyn Maxwell
Lydia Macfadden
Terry McCutcheon
Megan McDermaid
Steffy McGee
Jan Meredith
Carolyn Milander
Jamie Mittet
Darcy Monette
Nikki Morasco
Sharelly Moreno
Osha Morgensen
Adela Morrison
Doug Murray
Stuart Nelson
Robert Nichols
Kaz Okuma
Mary Clear Padilla
Nolan Pate
Marianne Paulson
Sandra Parker
Jane Pearson
Kathleen Peterson
Mary Polensky
Janet Powell
Annamae Robbins
Mia Radosky
John Ramm
Judi Ricci
Chelsea Resol
Kimberly Richardson
Ardys Richardson
Sandy Robinson
Anita Rockefeller
Samantha Russell
Shannon Russell
Judith Rogerson
Carol Ryan
Dorie Salem

Kathy Sawaka
Jennifer Schlee
Kyla Schroeder
Rod Seevers
Angela Sell
Pamela Selz
Veronica Serrano
Jeffrey Sherlock
Julia Sherlock
Bill Sibbett
Becky Sibbett
Larry Snyder
Lois Snyder
Gwen Spencer
Francis Spillane
Patti Spillane
Gordon Stenman
Annie Stevenson
Helen Stoll
Sharon Stritzel
Jim Strycharski
Dorothy Swenson
Stefanie Tanaka
Colleen Toepfer
Betsy Thompson
Mary Ann Thompson
Caitlin Toomey
Jeri Tucker
Jim Tucker
Leo Vasaitis
Tommy Van Cleave
Kathy Vittelow
Alexis Vititoe
Jennifer Waldron
Taylor Wright
Tom Wright
LaVerne Walter
Sarah Kee Webb
Barbara Webb
Jessica Welch
Nancy Wetzler
Lynn Wilkinson
Taylor Wright
Harriet Wright
Ashley Wynn
Carolyn Zane

Every effort has been made to ensure accuracy of the volunteer names. Please contact our Development Department at 360.394.4065 so we may correct any errors or omissions.

COMMUNITY



SOCIAL ACCOUNTABILITY

Organizations we proudly supported in 2018

Alzheimer's Association
Support Group
Bainbridge Island
Chamber of Commerce
Central Kitsap Food Bank
Children of the Nations
Gideon's International
Greater Poulsbo
Chamber of Commerce
Jewel Box Theater
Kingston Chamber
of Commerce
Kitsap Chordsmen
Kitsap Community Resources
Kitsap Economic
Development Alliance
Leading Age Washington
North Kitsap Fishline
Olympic College
Olympic Workforce
Development Council
Poulsbo Women's Yacht Club
St. Vincent DePaul
Silverdale Chamber
of Commerce
Toastmasters
Verkstad Gallery
YMCA



Martha & Mary Walks to End Alzheimer's

Martha & Mary's 16 person team raised more than \$3,300 for the annual 2 mile Walk to End Alzheimer's on September 8, 2018. Employees and residents held a Sweet Treat Sale and gathered pledges in support of the walkers who proudly participated.



This 2018 Annual Report reflects our commitment, not only to the people we provide care and services for, but to those in need in our surrounding communities.

Community members gathered at Martha & Mary in October, 2018 for a presentation called *Why Home Care?*



Why Home Care?

MARTHA & MARY At Home

in-home caregivers perform and how they can make a positive and impactful difference for adults and seniors needing help to successfully age in place.

Guests left with a better understanding of home care services and a heightened appreciation for the way it offers concerned family members peace of mind.

Diane Wasson, Home & Community Services Administrator, provided attendees with facts and information about the many benefits of non-medical home care services.

Diane highlighted the different kinds of care assistance trained

MARTHA & MARYSM
2018 generations of care

Black and White GALA

May 4, 2018

2018 DONOR APPRECIATION
PHILANTHROPY AWARDS

NOVEMBER 8, 2018

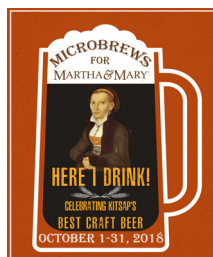
E vents

Decked out in black and white finery, more than 250 guests gathered at the Suquamish Clearwater Casino Resort on Friday, May 4 for Martha & Mary's annual Generations of Care fundraiser. The Black & White Gala included silent and live auctions, a raffle, and Raise the Paddle giving, that netted almost \$82,000 for Martha & Mary!

Raise the Paddle contributions helped us put an urgently needed new roof on the Child Care Center in Poulsbo. Proceeds from the silent and live auction and raffle supported vital training programs to ensure our caregivers keep their skills up-to-date and are able to meet rigorous State standards. Martha & Mary is deeply grateful for this necessary support, which helps us sustain our commitment to care for our community's elders and children, and the families who love them. Thank you to all who generously donated to Martha & Mary's mission of caring.

Martha & Mary's annual Donor Appreciation and Philanthropy Awards event on November 8, 2018 celebrated the crucial role donors play in our mission of caring. More than 80 donors, trustees, and staff leaders came together at the Village Green Community Center for our donor recognition festivities.

Dave and Sue Gitch received the 2018 Philanthropy Award, honoring more than 26 years of involvement with Martha & Mary, first as family members and then as volunteers and members of the Board of Trustees. In Dave and Sue's own words, "We continue to be impressed with not only the mission of Martha & Mary, but also with the fact that its leadership and staff "walk the talk." In an increasingly complex and changing health care world, Martha & Mary continues to care for all, regardless of socio-economic status. It will be there for us, too, when we need it."



Microbrews for Martha & Mary, our popular Kitsap craft brews passport fundraiser, took place from October 1-31. With the leadership of Poulsbo First Lutheran Church and Silverdale Lutheran Church, 15 Kitsap craft breweries and tasting rooms agreed to participate in this month-long event to raise funds for life-engaging activities for seniors. Special thanks to Western Red Brewing, Grub Hut, and the Poulsbo Vikings for making the event's after party a fun celebration.



A hero is any person really intent on making this a better place for all people.
- Maya Angelou

A heartfelt Thank You to our 2018 Heros...

Patron Society \$10,000 and above

Carl G. Behnke
Community
Development Block
Grant Program
-Kitsap County
Norcliffe Foundation

President's Society \$5,000-\$9,000

Bainbridge Community
Foundation
Katherine and David
De Bruyn
Kitsap Bank
Sluys Poulsbo Bakery/
Daniel and
Stephanie K. Sluys
Sodexo Senior Services

Tollefson Society \$1,000-\$4,999

Heather Beal and
Robert Patchin
Bethany Lutheran
Church
Raymond and
Jan Bourhill
Dana and Brenda Boys
James and
Sherry Carmichael
Linnea and the late
Franklin Chu
Consonus
Alan and Katie Crain
Dave and Sue Gitch
Cmdr. Peggy Grigg
Dr. Karl and Kelly Hadley
Richard A. Kalyn
Don and
Ramona Lachata
Lynette L. Ladenburg
Julie Lightfoot
Doug Love and
Rachel Running
Martha & Mary Auxiliary
Clif McKenzie
Jamie and Martin Mittet
Bobbie Moore and
Walt Elliott
Jim and Sharon Moore
Bob and Sharon Nichols
Shirley Olsen

Optum Care
One Call For All
Tamara and
Jarret Palodichuk
Port Madison
Lutheran Church
Poulsbo First
Lutheran Church
Propel Insurance
Rice Fergus Miller
Architecture &
Planning
Paula A. Rimmer
Ken and
Sandy Robinson
Phil and
Anita Rockefeller
Lois Rolfe
Silverdale Lutheran
Church
Helen and Evan Stoll
Swift Plumbing
Ron and Linda Tacker
Vincent and
Mary Ann Verneuil
Vinland Lutheran
Church
Diane and
Loren Wasson
Chris and Gail Whitley
Donald S. Willett
Mark and Anna Winney
Arch Wirth
Women of Port Madison
Lutheran Church
Roger and
LouAnn Wood
Kirk and
Jacqueline Youngman

Liberty Circle \$500-\$999

Greg and Tami Arend
Kurt and
Jessica Bennion
Jennifer and
Justin Brauer
Sue Bunn
Community of Christ at
Memorial Lutheran
Adam Crawford and
Missy Jarvis-Crawford
William Dybing
Mayor Becky Erickson
David Gibson and
Marla Saperstein

Kerwin and Allyn Higashi
Kingston Garden Club
Ed and Karen Kushner
Bill and Barb Lear
Michael and Tecla Legge
Mark and Kristine Libby
Barbara Koyama
Dena McCarthy
Medline
Our Saviour's
Lutheran Church
John Powers
Rose Sarion
Robin Schuman
Galen and
Miyong Schuler
Marion and
Loretta Sluys
Steven and
Linda Stenberg
Chris and
Kristine Vernon-Cole
Karen Werner
Western Red Brewery
Harry and
Nancy Wetzler
Adrienne Willder
Sharon and
Edward Wilson

Heritage Circle \$250-\$499

Carol and
Tom Anderson
Rep. Sherry Appleton
Helen Brant
Bob and
Kitty Campagna
Alex Candalla
Ann Dyer
Ann and Chuck Eklund
Emmanuel
Lutheran Church
Dawn England and
Marko Pirneskoski
Michael Felts and
Greta Stough
Brett and
Andrea Hickman
Jon and Linda Hicks
Marlene LeMire
Kristy Ludwig
Nieve Martir
Ellie Mathisen
Leah and
Greg Meadows
Gina and
Kristoffer Meloy

Ed and Cheryl Merrill
Gerald and
Margie Mittet
LeAnn Mong
Ardis Morrow
Tiffany and
Roger Musselman
Barbara Paul
Sally and
Percy Peregrino
Mary and
Warren Polensky
Poulsbo Garden Club
Jim and Judy Rowson
Pastors Kent and
Alison Shane
Slippery Pig Brewery
Sally Smith
Jim and Carol Standley
Frank and Pat Strickland
Laurie and Paul
Stumme-Diers
Larry Tellinghuisen
and Margie Nielsen
Matthew and
Trudy Thuring
Chuck Turner
David and Ann Wetter
Shelley and Art Wood

Supporter \$100-\$249

Anonymous
Gregory Awalt
Jennifer and
Johannes Bailey
Jeffrey Bassett
Terry Beaudoin
Cameron and
Kristin Bedard
Monica Blackwood
Hilma Bridges
Jennifer Chaussee
Dennis and Roberta
Cloutier
Michael B. Coleman
Steve and
Lee Anita Coleman
Wayne and Marcy Daley
Donald and
Jean Danielson
Tiffany Desaveur
Ellen and Mel Deungria
Chris and Annie Dodd
Dieter and
Audrey Ebeling

Tiffany Desaveur
Chris and Annie Dodd
Dieter and
Audrey Ebeling
Joanne and
Gary Erickson
Rev. Shirley Funk
Myron Groat
Mary Ann Guerrero
Sean and Matthew
Harper-Merrill
Karen Hedges
Monique Herring
Carol and Jim Hoffman
Donna Howard
Andrew Hunt
Steven and
Susan Ivancich
Charles and
Margaret Mathisson
Anthony and
Maria McCafferty
Steffy and Dan McGee
Paige and
Grant Middleton
Linda and Kevin Moran
Lynn Murphy
Meredith and
Laurie Musick
Sylvia Nelson
Glenn and Sally Nelson
Ellen Oconer-Deungria
David and
Patrice O'Morchoe
Jamie and Jake Payseno
Chester Phillips
William and Wilma Ridley
Bruce and
Ronine Riggins
Elaine Roecker
Asa and
Meghan Rubman
Frederick and
Madrigal Saas
Aaron and Mari Schielke
Kari A. Scott
Jack and Sheri Sipila
Spirit of Life Lutheran
Gordon Stenman
Tonya Stone
Jeff and Laurie Tolman
Turning Point Group
Louise Urness
Rick Viggue
Chris and
Jessica Visserman
Shirley Waldrip

Jessica Wall
Edward Wolfe
Scott and
Mikael Wotring
Women of Vinland,
Vinland Lutheran
Church
Harriet Wright

Friends Up to \$100

Mauricio and
Jennifer Acuna
Marilu Aganon
Joseph and Janet Alecci
Dorothy Anderson
Sherene and
Mark Arcivar
Kenneth Avery
Joseph and Janet Alecci
Deanna Albrecht
Bill Baird
Alice Brooke
Jim and Chris Butts
Joan Carson
Lauren Carson
John Castleman
Heather Dartt
Kevin and Lauren Eyer
Jose and
Cybele Gonzalez
Hale's Ales Ltd.
Chris Hansaker
Susan and
Ken Hassenmiller
Dave and Sigi Helgeson
Hood Canal Brewery
Ann Hooper
Rev. Ron Hoyum
Stephen and
Mary Lynn Johnson
Diane Lambert
Mark Logue
Lovecraft Brewing
Company
Lisa Martin
Kitt Mathisen
Alex McEwen
Kitson Metrick
Maddie Miller
Steve Monaco
Mary Nader
David and
Glenda Negrones
Merna Nordstrom
Alan and
Marlene Orwiler

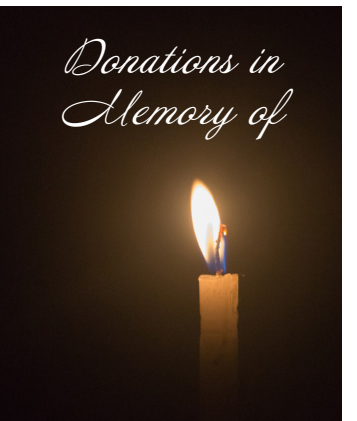
Peace Lutheran Church
Gustavo and
Stina Dragovich Pena
Allison Ramsey
Melanie Robbins
Patricia Ryan
Susan Saetrum
Ms. Kim Sather
Aaron and Mari Schielke
Harold
and Michelle Shea
Shahma Smithson
Monica Sorensen
Sandra Strand
Robert and
Patricia Stricklin
Colleen Swanson
Nancy Taylor
Debra Tertocha
John Veale
Jeffrey Washburn
Sherry Whitley
Beth Elaine and
Ryan Wirtz
Kaycie Wood
Geraldine Zabriskie



Rep. Sherry Appleton
Jill and Peter
Bang-Knudsen, Sr.
Bill and Carol Barrow
Bart Berg
David Bigelow
Tineke Dahl
Donald and
Jean Danielson
Karlene and Ted George
Stephen and
Deborah Hill
Julie Lightfoot
Margaret Mathisson
Dian Poyssick
Danielle Priest
Paula Rimmer
George and Evie Stege
Stephen Swann
Anonymous



Barbara Bolles
Francis and
Richard Burress
Linnea Enz Chu
Patricia D. Cook
Kemp Crawford
David and Helen Hecker
David Hunting
Lucinda Jacobs
Alan and Susan Kasper
Ed and Karen Kushner
Julie Lightfoot
David Mitchell and
Lisa Giles
Silven Moench
Sally O'Callaghan
Molly O'Hara
Catherine Petrek
Paula Rimmer
Libby Shonsey
George and Evie Stege
Laurie and
Paul Stumme-Diers
Ken Telschow
Rev. Deanna Vandiver
Marcia Walker
Joyce Zocher
Anonymous



Betty Palmer Mann
Eugene Monahan
Edward Michael Oas
Helen Willett from
the Family of
Donald S. Willett

STATEMENT OF FINANCIAL POSITION

Assets	2018		2017	
Current Assets	\$	7,358,746	40%	\$ 6,328,595 37%
Property and Equipment		9,085,616	50%	8,877,495 52%
Reserve and Restrictions		895,133	5%	814,537 5%
Beneficial Interest in Term Trust		826,176	5%	952,422 6%
Other		70,262	0%	65,958 0%
Total Assets	\$	18,235,933		\$ 17,039,007
Liabilities and Net Assets				
Liabilities				
Current Liabilities	\$	2,293,276	13%	\$ 2,088,217 12%
Long-Term Debt		14,137,081	78%	13,764,850 81%
Other Liabilities		20,262	0%	15,958 0%
Total Liabilities		16,450,619		15,869,025
Net Assets		1,785,314	9%	1,169,982 7%
Total Liabilities & Net Assets	\$	18,235,933		\$ 17,039,007

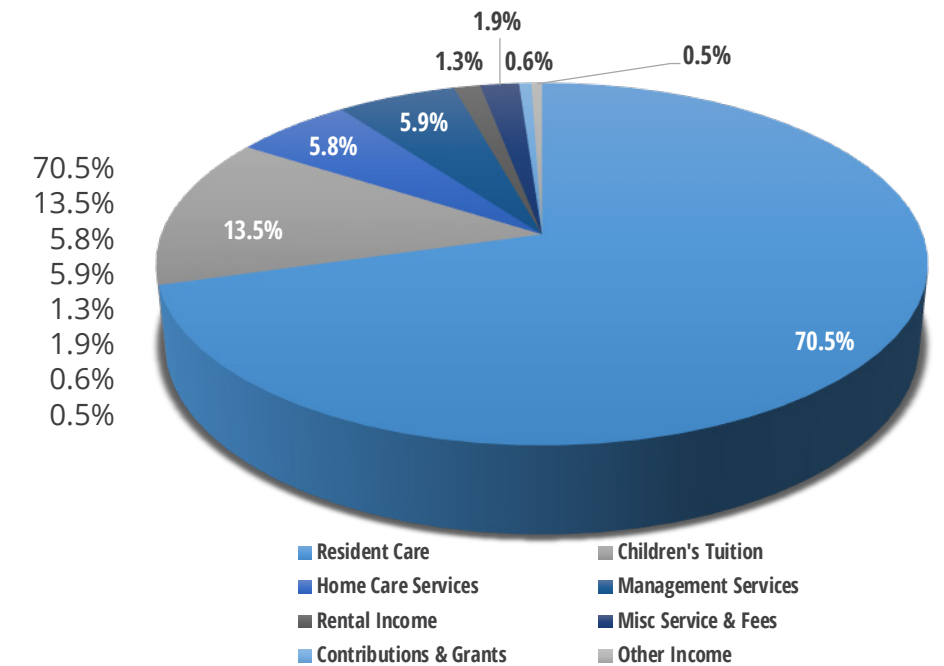
STATEMENT OF ACTIVITIES

	2018		2017	
Revenue				
Resident Care	\$	17,277,703	70%	\$ 16,928,845 69%
Children's Tuition		3,298,733	13%	3,142,288 13%
Home Care Services		1,412,622	6%	1,690,007 7%
Management Services		1,435,593	6%	1,388,277 6%
Rental Income		313,192	1%	302,351 2%
Misc. Service & Fees		491,248	2%	301,231 1%
Contributions and Grants		148,656	1%	336,045 1%
Other Income		126,815	1%	271,650 1%
Total Revenue		24,504,562		24,360,694
Expenses				
Salaries and Wage		13,676,034	56%	13,454,006 56%
Employee Benefits		3,537,639	15%	3,316,865 14%
Supplies and Food		1,909,961	8%	1,964,343 8%
Depreciation and Amortization		1,140,844	5%	1,043,765 4%
Utilities, Insurance & Other		1,412,904	6%	1,496,640 6%
Interest		489,672	2%	585,416 2%
Professional Services		2,023,772	8%	2,277,467 10%
Total Expenses		24,190,827		24,138,502
Income from Operations		313,735		222,192
Non Operating Revenues (Expenses)				
Loss on Impairment of Goodwill				(797,067)**
Nonoperating Revenues		177,999*		
Excess (Deficit) of Revenues Over Expenses	\$	491,734		\$ (574,875)

MARTHA & MARYSM

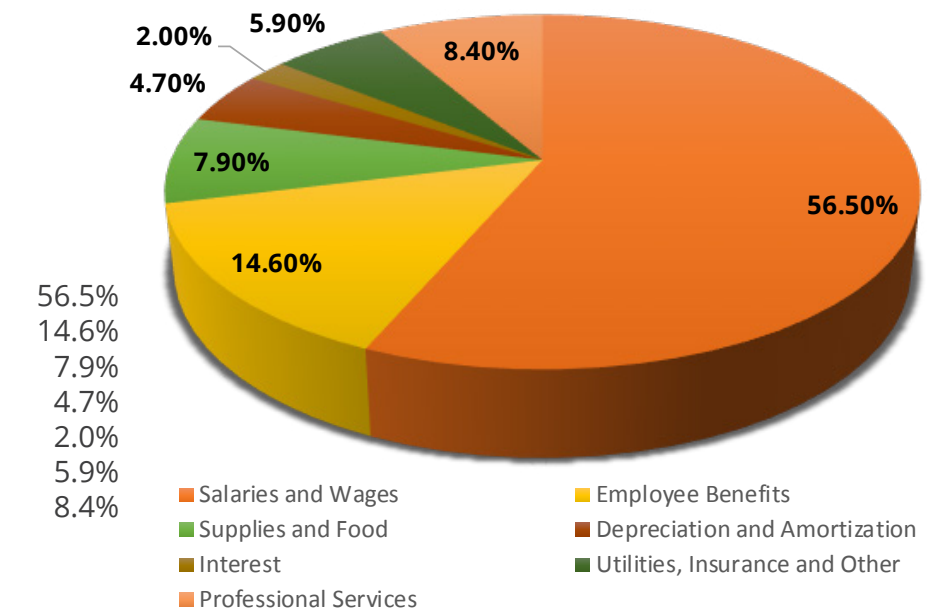
2018 REVENUE

Resident Care
Children's Tuition
Home Care Services
Management Services
Rental Income
Misc. Service & Fees
Contributions and Grants
Other Income



2018 EXPENSES

Salaries and Wages
Employee Benefits
Supplies and Food
Depreciation and Amortization
Interest
Utilities, Insurance and Other
Professional Services



* Insurance proceeds from the 2018 flood at the KIDS Early Learning Center.
**During 2017 the Organization early adopted ASU2017-04 and decreased AT HOME Services Goodwill to zero.



A circle of care for the circle of life.

We are Greater Kitsap's trusted care partner, serving our community from Gig Harbor to Bainbridge Island to Kingston, across the Hood Canal to Jefferson County, and south to Mason County. Our wide range of care services ease families through life's transitions, starting with children's programs, and extending to rehabilitation, home care, care management, senior housing and long-term care.

MARTHA & MARY AWARDS

Proud to share our
2018 accolades



Locations

Child Care Center:
POULSBO
Early learning programs for infants, toddlers, and preschoolers.

Children's Learning Center:
POULSBO
Early learning programs for Pre-K children.

Early Learning Center:
SILVERDALE
Early learning for infants, toddlers, preschoolers, and Pre-K children; before and after school care for school-age children.

School-Age Care Programs:
Silverdale, Poulsbo, & Kingston
On-campus care at seven elementary schools in Central and North Kitsap School Districts.

Health and Rehab Center:
POULSBO
190-bed skilled nursing facility providing short-term rehab, memory care, palliative and long-term care.

Bay Vista Commons:
BREMERTON
72-unit assisted living apartment and memory care campus.

Ebenezer Retirement Apartments: **POULSBO**
24-unit independent living apartments for residents age 62 and older.

Village Green Senior Apartments: **KINGSTON**
35-unit campus for independent residents age 62 and older.

AT HOME Headquarters:
POULSBO
Caring for clients in their homes from Gig Harbor to Bainbridge Island, and Jefferson and Mason Counties.



MARTHA & MARYSM

CARING FOR CHILDREN AND SENIORS SINCE 1891