

PAINT THE TOWN

*Yes, we did.
Virtually!*

GOOD TO KNOW!

- ◆ Thriving with almost 500 staff, Martha & Mary is one of the largest employers in Kitsap County. Many of our employees travel over an hour to and from work, across bridges or via ferry across the Puget Sound. The call for being a part of a team and providing quality care and services is answered by many and we are grateful for the expertise that has come our way.
- ◆ As if working for Martha & Mary is not rewarding enough, we offer many employment perks to staff such as gym membership discounts, cell phone discounts, retirement benefits and much more.
- ◆ The Martha & Mary Nursing Assistant Training Academy offers five classes per year, providing entry level, tuition-free healthcare training for up to 20 students/class. Guaranteed offers of employment following successful completion of the program is a win-win for everyone! Check our website for upcoming training classes!



OUR MISSION...Martha & Mary provides quality, compassionate care and intergenerational experiences for children, adults, and seniors regardless of faith, ethnicity, or economic status. We do this in a Christian manner by offering those we serve caring rehabilitation, a safe place to grow and learn and an opportunity to live with dignity, honor and individuality.

Learn more about Martha & Mary at www.MarthaandMary.org or follow us on [facebook](#).

IF YOU WOULD PREFER TO RECEIVE THIS NEWSLETTER ELECTRONICALLY, PLEASE EMAIL: INFO@MMHC.ORG

Martha & Mary's largest annual fundraiser, the Generations of Care Gala, was transformed on short notice into a virtual event this year due to the COVID-19 pandemic. In the Martha & Mary tradition of adapting, responding, and thriving, the entire community—near and far—rallied to help raise nearly \$100,000 in support of the Expansion of our Memory Care Facility and our much needed COVID-19 response.

More than 140 supporters cast 1,645 bids on fabulous art, weekend excursions, and much more, while others donated to the Fund-a-Need to underwrite the expansion of our memory care unit. Still others donated to support our COVID-19 response, a critical need during these challenging times.

The community support and outcome, as well as the feedback for the auction, were exceptional. Thank you to our amazing auction committee for their efforts to make our first virtual event a success! And to the community for your lively bidding, as well as donating to the Fund-a-Need, underwriting items, and sponsoring our Generations of Care Auction 2020, we thank you all! We are humbled and inspired by your generosity!

We are excited to announce we have planned another Generations of Care Virtual Auction in 2021! Mark your calendar as the next Generations of Care online auction is scheduled for March 2021! We are already seeking sponsors and accepting auction items for the 2021 event! If you would like to donate to the 2021 auction or become an event sponsor, please email: auction@mmhc.org. Thank you again for your generous support!

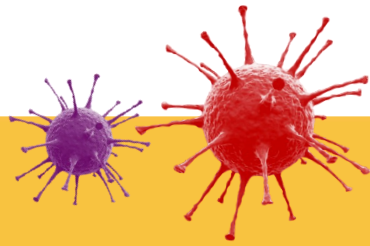
Check out our 2020 Sponsors inside!

Thank you to our 2020 Generations of Care sponsors.
Please support them as they have supported us.



For information about the 2021 Generations of Care Auction sponsorship opportunities, please contact: tobrien@mmhc.org

COVID-19 UPDATE



We continue to work hard to keep the Coronavirus outside the doors of Martha & Mary and away from those we care for. Although, like any business, we have experienced three of our staff who have tested positive for COVID-19 within our Health Center. The exposure to our staff and the residents was deemed minimal by the Washington State Department of Health (WSDOH). We have performed testing of all Health Services residents and staff repeatedly as directed by the WSDOH to best continue to monitor and protect everyone. To date, no Martha & Mary Health Services clients have tested positive for COVID-19.

We are committed to keeping our residents and/or their responsible parties apprised of our current COVID-19 status, following recommendations from the WSDOH, and we continue to maintain our strict infection control practices.

We all continue to remain at risk and we implore each one of you to do your part in protecting those around you from COVID-19. Wear a mask or facial covering anytime you are in public. Practice social distancing, maintaining 6-feet from others when outside your home and limit your travel whenever able. Together, we can help reduce the spread of COVID-19 that has impacted so many.

Intergenerational fun with **MARTHA & MARY Kids**

With limited visiting restrictions in all of our buildings, we have had to become very innovative incorporating our Intergenerational Programming. The joy of seeing our generations engage with one another brings so much to everyone at Martha & Mary, we knew we had to find way to keep them connected.



Through these challenges, our Martha & Mary Kids have learned to Skype with the Grandmas and Grandpas (a.k.a. the seniors in the Health Center), where they share stories, songs and smiles virtually with one another.



We are also fortunate to have the Martha & Mary Children's Learning Center just next door to our Memory Care Unit. The children's play area over looks the Memory Care Building where they enjoy waving, blowing kisses and hollering hello to the Grandmas and Grandpas below.

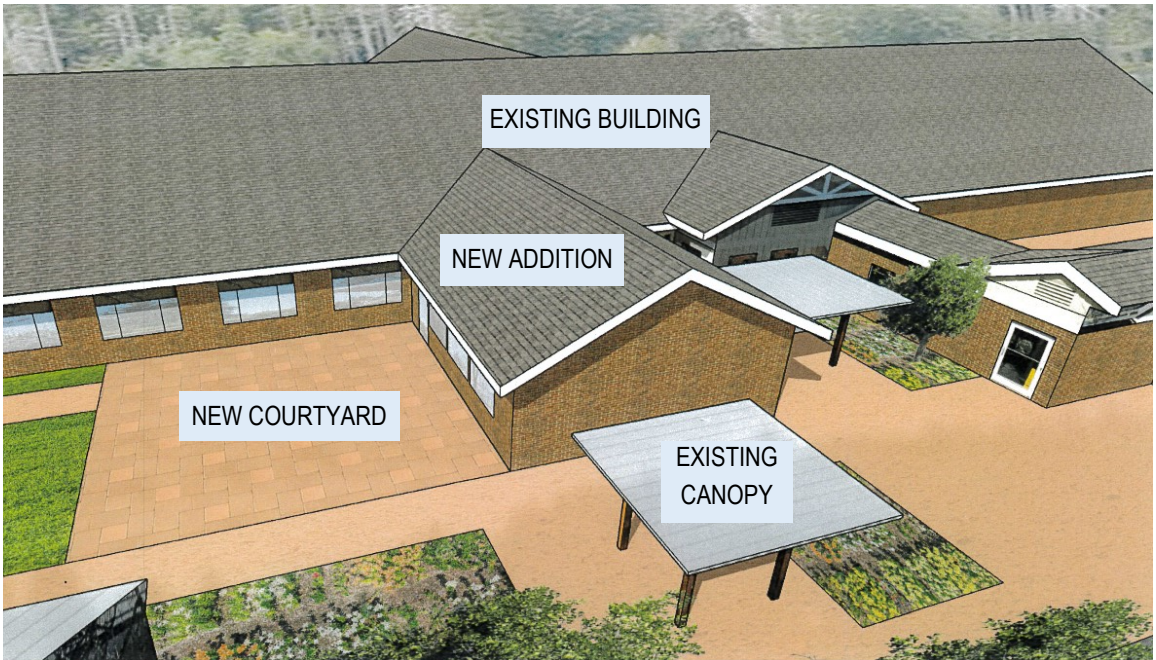


In the words of George Elliston, "How beautiful a day can be when kindness touches it!"

EXPANDING OUR WORLD

When it comes to caring for those with memory loss or impaired cognition, consideration of the environment in which they reside is important. From the finishes that enhance a room, to appropriate lighting to reduce the effects of sundowning, and planning of the space available, each detail must to be carefully thought out and executed. Plans for expansion to the memory care unit allow for these details and the creation of a more home-like environment for everyone in our Memory Care Unit to enjoy.

Our 68-bed Memory Care Unit boasts beautiful gardens, private and semi-private rooms, and two large dining rooms for residents and their loved ones to enjoy. A new 780 square foot addition will support the much needed space for our growing and robust brain, body and spiritual activities designed especially for our memory care residents; pet therapy, art classes, horticulture activities, and the many intergenerational programs that bring smiles to all will fill this new space. This spacious, home-like area will encourage more participation from others, allow for more activities of interest to be offered individually and within small groups and provide a warm and welcoming space for staff, families and friends to visit and engage with their loved ones.



We hope you will consider joining us in this endeavor that will benefit many seniors for years to come. If you would like more information about this project or how you can help us reach our goal, please contact our Chief Development Officer, Tina O'Brien via email at: tobrien@mmhc.org or call 360.394.4065. We look forward to hearing from you!

WE HATE TO TOOT OUR OWN HORN BUT...TOOT, TOOT!



THANK YOU WESTSOUND HOME & GARDEN READERS! WE ARE HONORED BY YOUR PATRONAGE AND SUPPORT !