

Martha & Mary Growing Stronger

The year 2021 has been an exhausting, eventful and exciting year at Martha & Mary.

Exhausting as we continue to live with the looming threat of COVID-19 entering our child care and senior centers. While we have dodged COVID-19 through much of the pandemic, the efforts to maintain a COVID-19 free environment are here to stay well into the foreseeable future. From daily temperature monitoring, screening for COVID-19 symptoms, to mandatory testing and vaccines, we have persevered through these ever changing and challenging times. Our staff have courageously earned **Hero** status time and time again. For that we are so very proud and thankful!

This year has also been *eventful*. Together we celebrated the Summer Olympics, created artsy displays for our main campus to celebrate Independence day, dressed up in crazy hats, celebrated Christmas in July, welcomed back football season (Go Hawks!), and are now preparing for and looking forward to the holiday season. Yes, we have had some fun, and grown closer together as a family while continuing to provide excellent service to those in our care.

And last, this year has been *exciting*! Strong organizations are continuously evolving and Martha & Mary is in the strategic master planning process to evaluate and better serve the community. In 2021, Martha & Mary received approval to close the **first floor** of our Health Services Building and transition this space into a large child care and learning center. This new and larger space will have the capacity to care for an additional 75+ children in Kitsap County.

What was once a place for senior healing and care, will now become a place where children grow, learn and play. The position of the Child Care & Learning Center, under the same roof as our seniors, will enhance the Intergenerational Program (IGP) opportunities Martha & Mary is well known for and enrich the lives of all. IGP supports the caring and kindhearted interactions we hope every child has the opportunity to embrace, appreciate and learn from in their developmental years.

Seniors residing in the Health Services building are excited for the transition. Campus amenities are easier for seniors to access as they are now all on the same floor of the building. Residents in the Health Services building are looking forward to watching children at play, hearing their laughter and sharing stories and smiles together.

There is a need for child care in Kitsap County and Martha & Mary is the right organization to help support this calling. We hope you share in our excitement as we look forward to welcoming the Martha & Mary Kids onto our main campus by the end of 2022. Thank you for cheering us on, sharing our excitement and holding us close in prayer. We are forever grateful!



Excitement is Building at Martha & Mary!

Remodel of the first floor of our Health Services building in Poulsbo is underway! We are preparing for our future **Martha & Mary Kids Child Care & Learning Center**. This new child care facility will combine the children from the Martha & Mary Kids Child Care Center and Learning Center in Poulsbo under one roof. Additionally, there will be more than enough space to bring in additional children from the community to benefit from our educational and care services.

We are currently in the demolition and discovery phase of this project. This phase involves comparing the original building plans with the structures we are revealing as we open walls and ceilings. Thus far, we are happy to report that our findings are consistent with our existing building plans.

Evolving with the changing times keeps our organization strong and at the forefront of our industries. The future for Martha & Mary is bright and we look forward to the opportunities ahead. If you would like to support this project or learn more about it, please email: supportus@mmhc.org



FUND-A-WISH DURING THE SEASON OF GIVING



As a not-for-profit organization, being good stewards of dollars earned and contributed to support our mission is paramount. Donations to the **Greatest Need** allows flexibility for Martha & Mary to distribute funds to areas that need financial backing, ensuring quality care and services for our children and seniors. We believe one does not need a single reason to help people. This fund offers countless reasons to provide support for many.



Encouraging and maintaining top performers in the senior care and child care industry is vital in today's changing world. Training forums and techniques are evolving daily and professionals, such as ours, are seeking avenues for continued career growth and development. This **Training & Development** fund will help support these endeavors and ultimately enhance our quality of care and services for years to come.



The pandemic allowed our caregivers in both senior care and child care to shine as bright as the brightest stars. We have forever been in awe of their work but they have now officially achieved **Super Hero** status. For their courageous work, we choose to honor and reward them whenever possible. This **Super Hero** fund will help us celebrate our heroes accomplishments and continue to encourage great success.

Donations may be made securely through our website at www.MarthaandMary.org or via mail with the enclosed envelope. Thank you for your generous support, love and prayers you offer our Martha & Mary family.

★ BEST NURSING HOMES 2022 ★



We are excited to share that Martha & Mary Health Services has once again received recognition from Newsweek and Statista Inc. as one of the BEST NURSING HOMES in Washington State. We ranked third in Washington State overall and we are the only nursing home in Kitsap County to receive this high honor.

The ranking is based on the results of an independent analysis of key performance indicators on health inspections, quality measures, staffing, recommendations from experts and our COVID-19 response. For more information please visit:

[America's Best Nursing Homes 2022 - Washington \(newsweek.com\)](https://www.newsweek.com/best-nursing-homes-2022-washington)

Happy Harvest from **MARTHA & MARY** Kids

Martha & Mary Kids having fun this Harvest season!

(Right) Perfect pumpkin poise in Poulsbo.

(Below right) Toddlers harvesting the Pumpkin Playground at M&M Kids in Silverdale.

(Bottom) Toddlers learning about the fall weather and the vibrant colors of the changing leaves.



COVID-19 UPDATE

As of October 18, 2021, Martha & Mary is following the Washington State Governors Proclamation which requires all employees working in the Child Care and Health Care setting be fully vaccinated for COVID-19, unless they are exempt for medical and religious reasons.

We are proud to report our overall Martha & Mary employee vaccination rate as of October 31, 2021 is 91%. We have provided COVID-19 booster shots to our seniors in the long-term care settings and to all of our staff who desire the additional vaccine. We continue to be diligent about screening everyone who enters our buildings for COVID-19 to prevent transmission of the virus.

We encourage you as our supporting community, to continue to protect yourself and others with use of a facemask when out in public, frequent handwashing, social distancing and to get the COVID-19 vaccine if it is appropriate for you. For more information about COVID-19 please visit www.cdc.gov.



DOING WHAT YOU LOVE IS REWARD IN ITSELF. WHERE YOU DO IT CAN MAKE IT EVEN BETTER.

Not unlike many other businesses across the State of Washington, recruitment for new employees to strengthen our workforce has been slow going. Teachers, Licensed Nurses, Nursing Assistants, Dining Staff and many more opportunities from skilled positions to entry level jobs await the right candidates to join our Martha & Mary family.

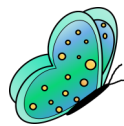
Please visit the CAREERS section of our website at www.MarthaandMary.org and see what position might be right for you or someone you know.

MARTHA & MARYSM
CARING FOR CHILDREN AND SENIORS SINCE 1891
19160 Front Street | PO BOX 127
Poulsbo, Washington 98370

www.MarthaandMary.org

MARK YOUR CALENDAR • SAVE THE DATE • FUN BEGINS MARCH 18, 2022 AND ENDS MARCH 26, 2022!

Planning is underway for our 2022 Virtual Generations of Care Auction. This event will benefit both Martha & Mary seniors and **Kids** as we refurbish the first floor of our Health Services building in Poulsbo in preparation for the future Child Care and Learning Center.



MARTHA & MARYSM



Bridging Generations, Enriching Lives!
Generations of Care Auction March 2022

Repurposing this space will allow for more child care services to better serve our families in the community and provide unique and fulfilling opportunities for intergenerational experiences with our "Grandmas and Grandpas" and Martha & Mary **Kids**.

If you would like to support this project through a sponsorship or by donating an auction item to our virtual auction, please visit our **Generations of Care Auction** link at www.MarthaandMary.org or contact our Development Team at supportus@mmhc.org or call 360.394.4065. Thank you in advance for your support of this amazing organization. We are forever grateful. ❤️

OUR MISSION...

Martha & Mary provides quality, compassionate care and intergenerational experiences for children, adults, and seniors regardless of faith, ethnicity, or economic status. We do this in a Christian manner by offering those we serve caring rehabilitation, a safe place to grow and learn and an opportunity to live with dignity, honor and individuality.