

---

130 YEARS  
OF CARE



MARTHA<sup>SM</sup>  
& MARY

CARING FOR CHILDREN AND SENIORS SINCE 1891

---

2021 ANNUAL REPORT

## 2021 BOARD OF TRUSTEES

Alan Crain, President  
Bill Baird, Vice President  
Katherine De Bruyn, Secretary  
Sherry Appleton  
Shannon Bruce  
Corey Burchill  
Pastor William Crabtree  
Dr. Susan Eagan  
Dr. Kate Haskin Brostoff  
Dr. Christina Hughes  
Lindsey Lind  
Jamie Mittet  
Bobbie Moore  
Phil Rockefeller  
Galen Schuler  
Helen Stoll

## SUPPORTING CONGREGATIONS

Bethany Lutheran  
Bainbridge Island  
Emmanuel Lutheran  
Bremerton  
Our Saviour's Lutheran  
Bremerton  
Peace Lutheran  
Bremerton  
Port Madison  
Bainbridge Island  
Poulsbo First Lutheran  
Poulsbo  
Silverdale Lutheran  
Silverdale  
Vinland Lutheran  
Poulsbo

## SENIOR LEADERSHIP

Lynette L. Ladenburg  
Chief Executive Officer  
Chris Vernon-Cole  
Chief Operating Officer  
Aaron Schielke  
Chief Financial Officer  
Tina O'Brien & Glen Melin  
Chief Community & Development Officer  
Jessica Visserman  
Chief Human Resources Officer  
Heather Dartt  
Health Services Administrator  
Kristine Grant  
Marketing, Communications  
Leah Meadows  
Director of Clinical Services  
Tammi Palodichuk  
Children's Services Administrator  
Jamie Payseno  
Assisted Living Administrator  
Angie Napier  
Executive Assistant

## MARTHA & MARY CORPORATIONS

Martha & Mary Lutheran Services  
Poulsbo, WA  
Martha & Mary Senior Living  
Bremerton, Kingston & Poulsbo, WA  
Martha & Mary Home Care  
From Pierce County to Jefferson County  
Martha & Mary Health and Rehab Services  
Poulsbo, WA  
Martha & Mary Kids Child Care Services  
Poulsbo & Silverdale, WA



# 130 YEARS OF QUALITY CARE

The year 2021 was a year of challenge, change and celebration. It was the second year of the COVID-19 pandemic and Martha & Mary endured once again, showing strength as a family and success as a team.

## Together we conquered challenge.

While still striving to defend against and defeat the perils of COVID-19, the global pandemic that impacted the world in 2020, Martha & Mary continued to focus on the future. From child care to senior care, the challenges of the pandemic encouraged our teams to focus on opportunities for strategic changes to strengthen and elevate our organization. We embraced every new challenge and persevered with passion to fulfill our mission.

## We embraced change.

In 2021, Martha & Mary made a strategic decision to expand Martha & Mary Kids. This expansion project includes right-sizing the Health & Rehab Service Center in Poulsbo and reestablishing new space within the same building for a large Child Care and Learning Center.

## And we celebrated!

Martha & Mary was first established in 1891 as an orphanage for young boys. Caring for children is where we began and continues to be a growing part of our organization. Creating new child care space on our main campus in Poulsbo will allow for the care and services of an additional 75+ children and their families. Additionally, the proximity of the Child Care & Learning Center to our seniors, residing in the same building, will enhance the Intergenerational Programming Martha & Mary is well-known for.

The pandemic prompted us to look into the future and realize our gifts we had to offer the families in need of child care in our community. We reflected on our past, as we celebrated 130 years of service in Kitsap County and are creatively planning for the future. Continuing to build on this legacy is an honor we all are proud to share. The new Martha & Mary Kids Child Care & Learning Center is expected to open in 2023. We can't imagine a better way to honor and celebrate 130 years of caring, than to plan for the next 130 years serving the community.

With gratitude and excitement for a bright future,

*Lynette L. Ladenburg*  
Chief Executive Officer



*Alan Crain*  
President, Board of Trustees





# Kids

## 2021 at a glance

Due to COVID, 7 of 10 child care locations were open by the end of the year.

Provided care and services to an average of 261 children/day

130,000 meals and snacks served to our growing kids

**Martha & Mary Kids** touched the lives of over 500 children and their families in 2021. We continued to persevere, along with the rest of the world, through the COVID-19 pandemic navigating challenges as they came our way.

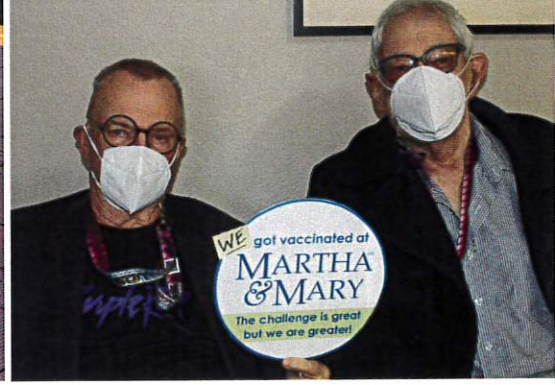
True to the spirit of Martha & Mary Kids, early childhood development is embraced far beyond fun and games. Educational, social-emotional, and physical development are all aspects of a child's growth we nurture and support.

In 2021, COVID remained a strong focus to how we provided care. We continued adjusting our policies and procedures as needed to ensure the most effective way we could limit exposures in our programs. Our focus remained on teaching and learning about germs, singing songs about the importance of handwashing and making the best of wearing masks, often times leading to long discussions on the fun mask designs being worn for the day.

We embraced many learning opportunities outdoors from outdoor games, art, science, nature walks, picnics, and even cared for and released butterflies.

Despite the challenges our skilled team of teachers and support staff continued engaging the children in meaningful activities to keep their minds growing and their bodies busy.

While the COVID pandemic has hindered our preferred collaborations, with the "grandmas and grandpas," we have been able to continue the connections virtually. Through the power of technology, we are able to share stories, songs and laughter together, brightening the world of both the young and the aged.



## Senior Living<sup>SM</sup>

Village Green, Kingston, WA

4-Story High Rise

35 Units of Affordable Senior Housing

Ebenezer Senior Living  
Poulsbo, WA

4-story High Rise

24 Units of Affordable Senior Housing

Just a short 10 mile drive from Martha & Mary in Poulsbo, nestled in the quaint town of Kingston, Washington are the **Village Green Senior Living Apartments**.

This income qualified community offers extraordinary views of Apple Tree Cove, and the beautiful green-belt of the Village Green Community Center.

Martha & Mary currently maintains partial ownership of Village Green and shares a close familial relationship just as with our other Martha & Mary facilities.

Near the Martha & Mary main campus in Poulsbo, and overlooking one of our child care centers, are the **Ebenezer Senior Living Apartments**.

Having been renovated over the years, this senior living site was first established in 1909 and now boasts 22 one-bedroom units and 2 studio apartments.

From extraordinary views of the Olympic mountains and Liberty Bay, to a short walk to downtown Poulsbo, this desirable location, along with Village Green Senior Living Apartments, maintains a waitlist for future residents.



# HEALTH SERVICES Rehab

## 2021 at a glance

52 Total new admissions

71 Total discharges

Average Daily Census of 113

25,000+ COVID-19 swabs/tests completed

1 Resident tested positive for COVID-19

19 Staff tested positive for COVID-19

500+ COVID-19 vaccines administered

COVID-19 was at the forefront of much of our work in the Health Services building in 2021. From weekly COVID testing, screening for symptoms of COVID-19 of all who entered our building, to tracking any possible exposures to the potentially lethal virus, we worked hard to protect those in our care. Our efforts were rewarded with success, with only one resident experiencing and surviving COVID-19.

In 2021, with the changing environment in long-term care, we made the decision to "right-size" the Health Center. We reduced our licensed beds from 190 to 135, closing the 55 bed unit on the first floor. Recognizing that care is moving to the home environment, we are preparing to meet the needs of the future for seniors in Kitsap County. Consolidating to the main floor of the Health Services building allows our seniors and their families easier access to amenities such as the Chapel, Hair Salon, Gift Shop, and our beautiful veranda that overlooks Liberty Bay. Additionally, we created a new Rehabilitation Gym to continue to provide short-term medical rehabilitation services for those in need of this level of care.

We are honored to remain one of Kitsap County's most sought out senior care providers, and proud to serve as an extension of the quality care provided by our local hospitals and care partners. For the second year in a row, we were honored in the Top 3 Best Nursing Homes in Washington State (Source: NEWSWEEK).



**BAY VISTA  
COMMONS**

## 2021 at a glance

18 Total new admissions

19 Discharges/move-outs

Average daily census of 61  
(85% occupancy)

3 Residents tested positive for COVID-19

5 Staff tested positive for COVID-19

Located in Bremerton, Washington, **Bay Vista Commons Assisted Living & Memory Care** is an affordable senior housing community owned by the Bremerton Housing Authority and managed by our Martha & Mary family.

Boasting 72 spacious apartments and a variety of common areas, Bay Vista Commons resides on a hillside just south of Oyster Bay offering scenic views for all to enjoy.

## At Home™

With the dedication of 30 staff, this small yet mighty team provides care and chore services for nearly 60 clients within Kitsap County.

Not to be confused with Home Health, Martha & Mary **At Home** provides *Home Care* where services such as personal care, bathing, transportation, companionship and more, are provided to support the seniors' independence within their home. Sometimes, a little extra help is all that is needed to help a senior age in place and live as independent as possible.



# A MESSAGE FROM DEVELOPMENT

*"Money is but one venue for generosity. Kindness is an even more valuable currency." (Alan Cohen)*

Martha & Mary is blessed to have a passionate family of supporters whose financial assistance helps equip us to fulfill our mission. Our "fan club" includes beneficiaries of the services we provide, family members of those we serve, employees and their families, board members and volunteers, area businesses, and corporate foundations. We are grateful for the kindness of people who value what we do and who invest their resources to help us do it even better.

Here are a few highlights from Martha & Mary's development efforts in 2021:

- ♦ The 2021 Generations of Care Gala achieved great results despite pandemic-related restrictions. Our virtual event featured over 250 auction items, attracted 194 bidders, and raised over \$80,000 to support the development of our new Child Care & Learning Center!
- ♦ Martha & Mary received grant funding from the Kitsap Community Foundation, the Bainbridge Community Foundation, the Seattle Foundation, and the Rayonier Community Fund. These grants are an encouraging testimony to the value our services bring to the communities we serve.
- ♦ Individual donations to Martha & Mary ranged from a \$5 payroll deduction gift to a \$25,000 estate gift from the family of a former health center resident. In all we received over 300 donations totaling over \$150,000 during the calendar year.

The generosity of our supporters is just one of the many expressions of kindness that inspire and energize our team. If you'd like to discuss how you can help us meet our development goals, please give me a call at 360-394-4065. I look forward to meeting you!

*Glen Melin*

Chief Community & Development Officer



Martha & Mary welcomed Glen Melin to our team in December 2021.

Glen offers over 30 years of experience in the not-for-profit, long term care sector, working in a wide variety of leadership roles. We could not be more pleased to have Glen join our Martha & Mary family.

## SPECIAL THANKS TO OUR 2021 GENERATIONS OF CARE SPONSORS!

### **Kitsap Bank**

**Max Hayslette & Don  
Sederholm**

**Bobbie Moore & Walt  
Elliot**

**David & Katherine  
De Bruyn**

**Green Diamond  
Resource Company**

**Consonus Healthcare**

**Hill Worldwide  
Moving Service**

**OPTUM Care**

**Sodexo**

**Propel Insurance**

**Rayonier**

**Crabtree Kitchen + Bar**

**Heritage Fireplace Shop**

**Kitsap Community  
Foundation**

**Poulsbo Animal Clinic**

**Sherrard, McGonagle,  
Tizzano, Lind  
Attorneys at Law**

**Swift Plumbing & Heating**

***Please support these  
amazing sponsors as  
they have supported us!  
Thank you!***

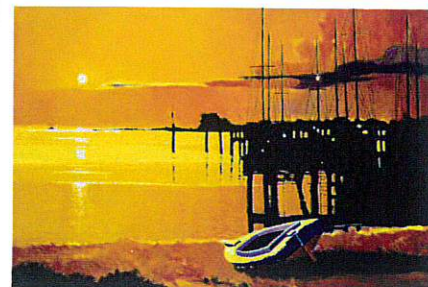
## STATEMENTS OF FINANCIAL POSITION

ASSETS	2021	2020
Current Assets	\$ 10,126,258	\$ 7,935,485
Property & Equipment	7,771,740	8,331,285
Reserves & Restricted Deposits	991,136	668,577
Beneficial Interest in Term Trust	1,094,964	1,034,431
Other	93,364	74,871
<b>Total Assets</b>	<b>\$20,077,462</b>	<b>\$18,044,649</b>
<b>LIABILITIES &amp; NET ASSETS</b>		
Liabilities		
Current Liabilities	\$ 2,032,765	\$ 1,823,653
Long-term Debt	14,007,380	13,536,068
Other Liabilities	43,364	24,871
Total Liabilities	16,083,509	15,384,592
Net Assets	3,993,953	2,660,057
<b>Total Liabilities &amp; Net Assets</b>	<b>\$20,077,462</b>	<b>\$18,044,649</b>

## STATEMENTS OF ACTIVITIES

REVENUE	2021	2020
Resident Care	\$12,554,173	\$15,640,074
Children's Tuition	3,173,520	2,844,604
Home Care Services	1,006,669	1,091,561
Management Services	1,669,708	1,707,609
Rental Income	319,137	315,140
Misc. Fees & Services	131,029	225,327
Contributions & Grants	2,836,535	1,457,215
Other Income	113,963	152,504
<b>Total Revenue</b>	<b>21,804,734</b>	<b>23,434,034</b>
<b>EXPENSES</b>		
Salaries & Wages	11,723,169	13,167,990
Employee Benefits	3,438,939	4,167,637
Supplies & Food	1,237,804	1,440,460
Depreciation & Amortization	1,053,049	1,033,115
Utilities, Insurance & Other	1,339,864	1,296,346
Interest	500,071	563,235
Professional Services	1,228,675	1,397,704
Loss on Refinancing of Debt	160,146	—
<b>Total Expenses</b>	<b>20,681,717</b>	<b>23,066,487</b>
<b>Income from Operations</b>	<b>1,123,017</b>	<b>367,547</b>
<b>EXCESS OF REVENUES OVER EXPENSES</b>	<b>\$ 1,123,017</b>	<b>\$ 367,547</b>

## ABOUT THE COVER



### *Reflections in Gold*

*-In Memory of Don Sederholm*

*Reflections in Gold* is a painting by internationally acclaimed artist and good friend of Martha & Mary, **Max Hayslette**.

A West Virginia native, Hayslette and his life partner, Don Sederholm, lived and worked in Chicago until 1962 when they moved to Seattle to work on projects at the 1962 Seattle World's Fair. They moved to Bainbridge Island in 1973 where they founded the art publishing and distribution firm of Olympus Graphics and Olympus Atelier until 1984.

Max and Don continued their journey in Kitsap County as an artist and manager for more than 40 years until Don's passing in November 2021.

Don was an avid crossword puzzle creator, an international traveler, and will be remembered by many for his quick wit and grand sense of humor.

Thank you Don for the memories and the many laughs we shared.

~Your Martha & Mary family

Max's art can be found around the world in famous galleries, educational institutions and among many corporate and private collections including the halls at Martha & Mary in Poulsbo.

Learn more at [maxhayslette.com](http://maxhayslette.com)





## Our Mission

Martha & Mary provides quality, compassionate care and intergenerational experiences for children, adults, and seniors regardless of faith, ethnicity, or economic status. We do this in a Christian manner by offering those we serve caring rehabilitation, a safe place to grow and learn and an opportunity to live with dignity, honor and individuality.

19160 Front St NE • PO Box 127 Poulsbo, WA 98370 • 360.779.7500 • [www.MarthaandMary.org](http://www.MarthaandMary.org)

**MARTHA<sup>SM</sup>  
& MARY**  
PO Box 127 Poulsbo, WA 98370